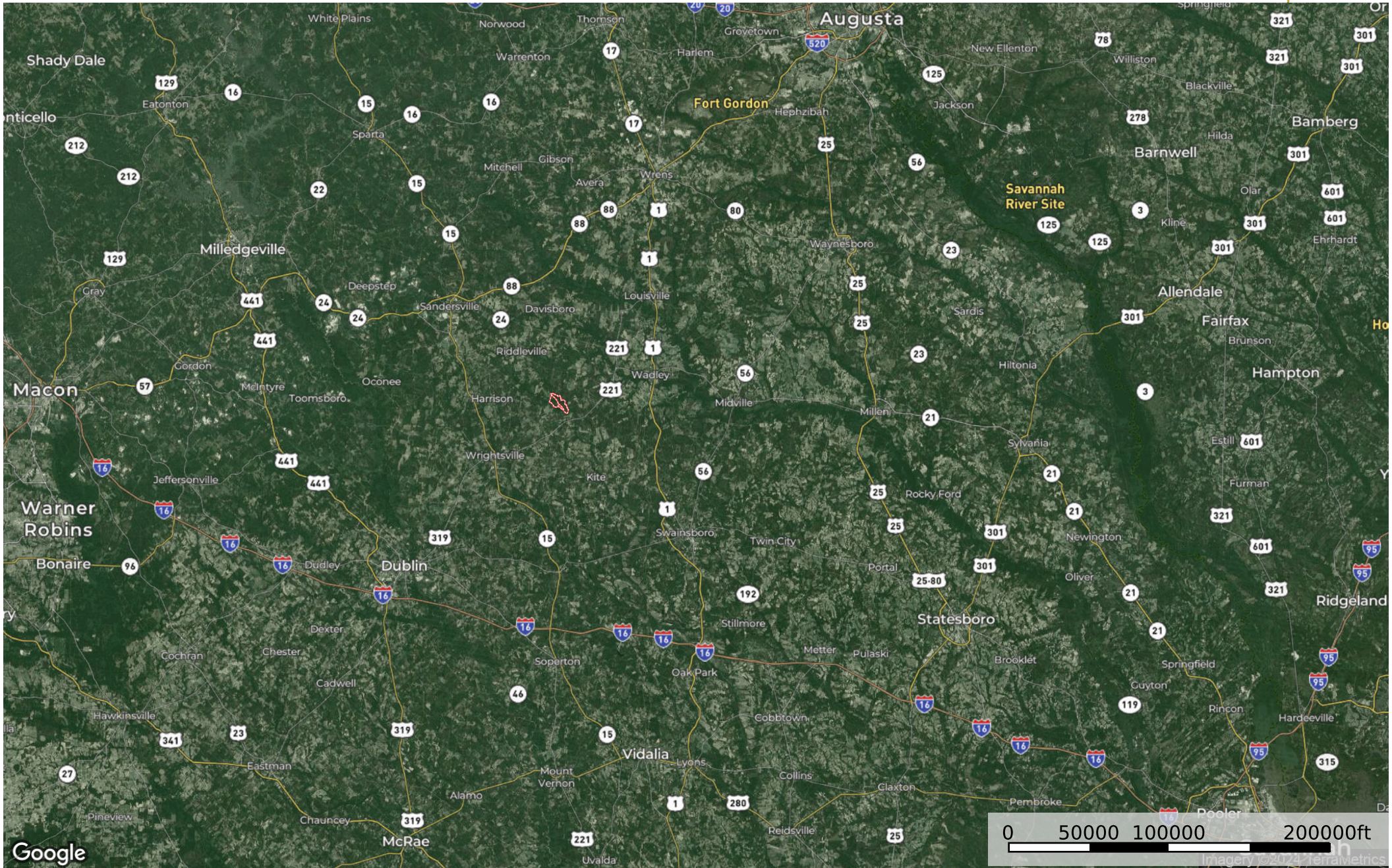


Sawtooth Farm

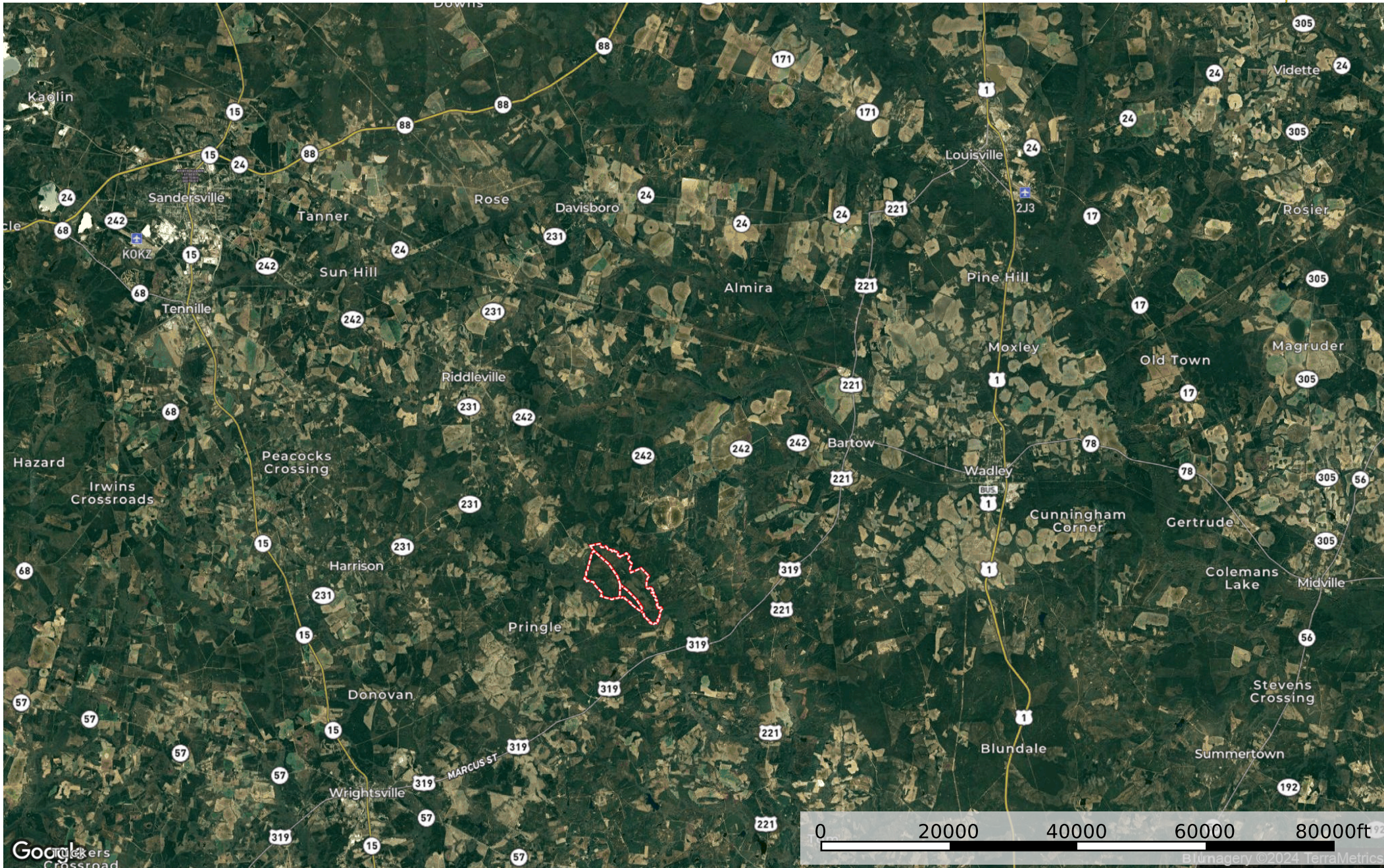
Johnson & Washington Counties, GA +/- 1,578 Acres



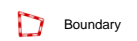
Boundary

Sawtooth Farm

Johnson & Washington Counties, GA +/- 1,578 Acres



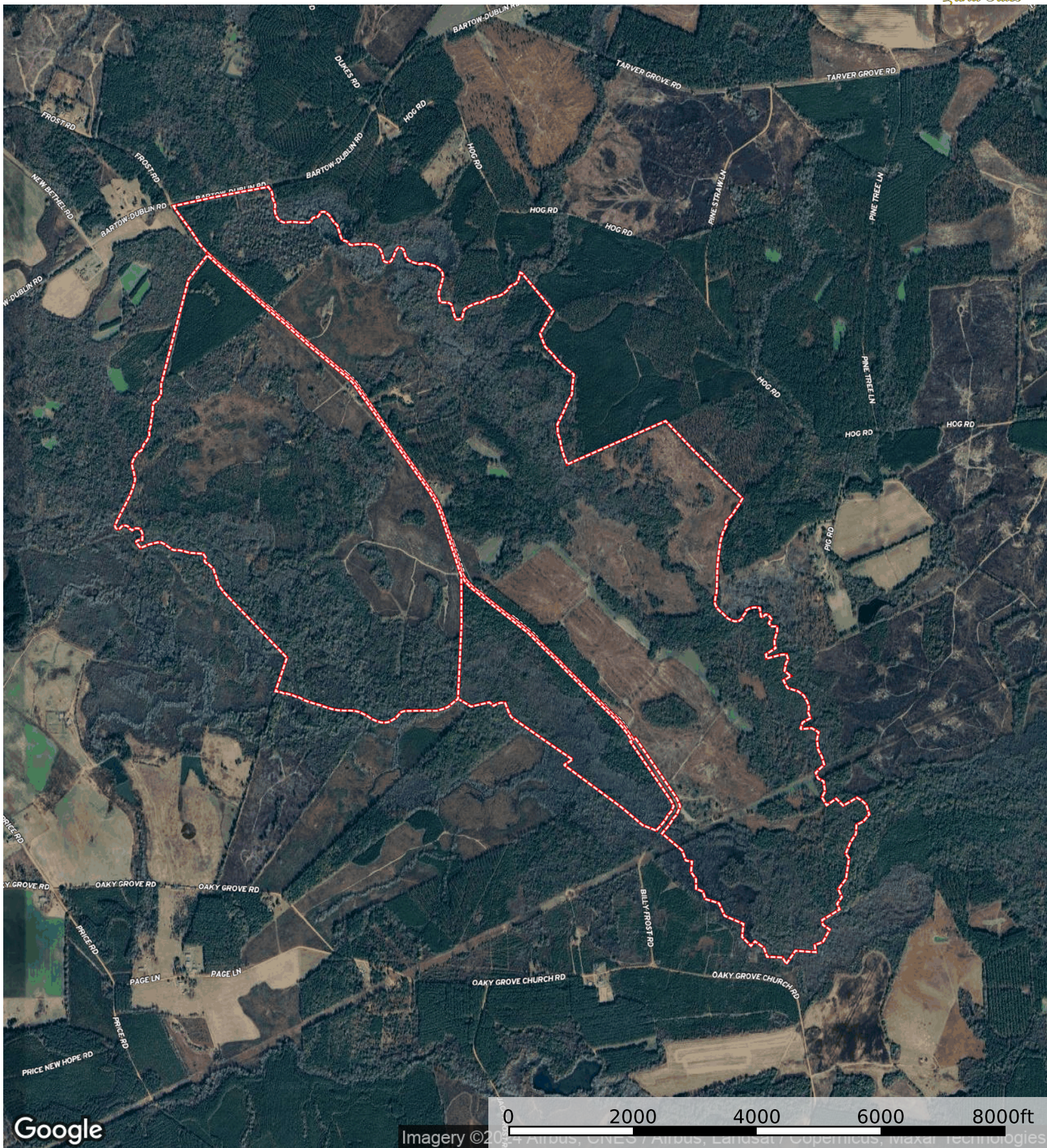
Blunagery ©2024 TerraMetrics



Boundary

Sawtooth Farm

Johnson & Washington Counties, GA +/- 1,578 Acres



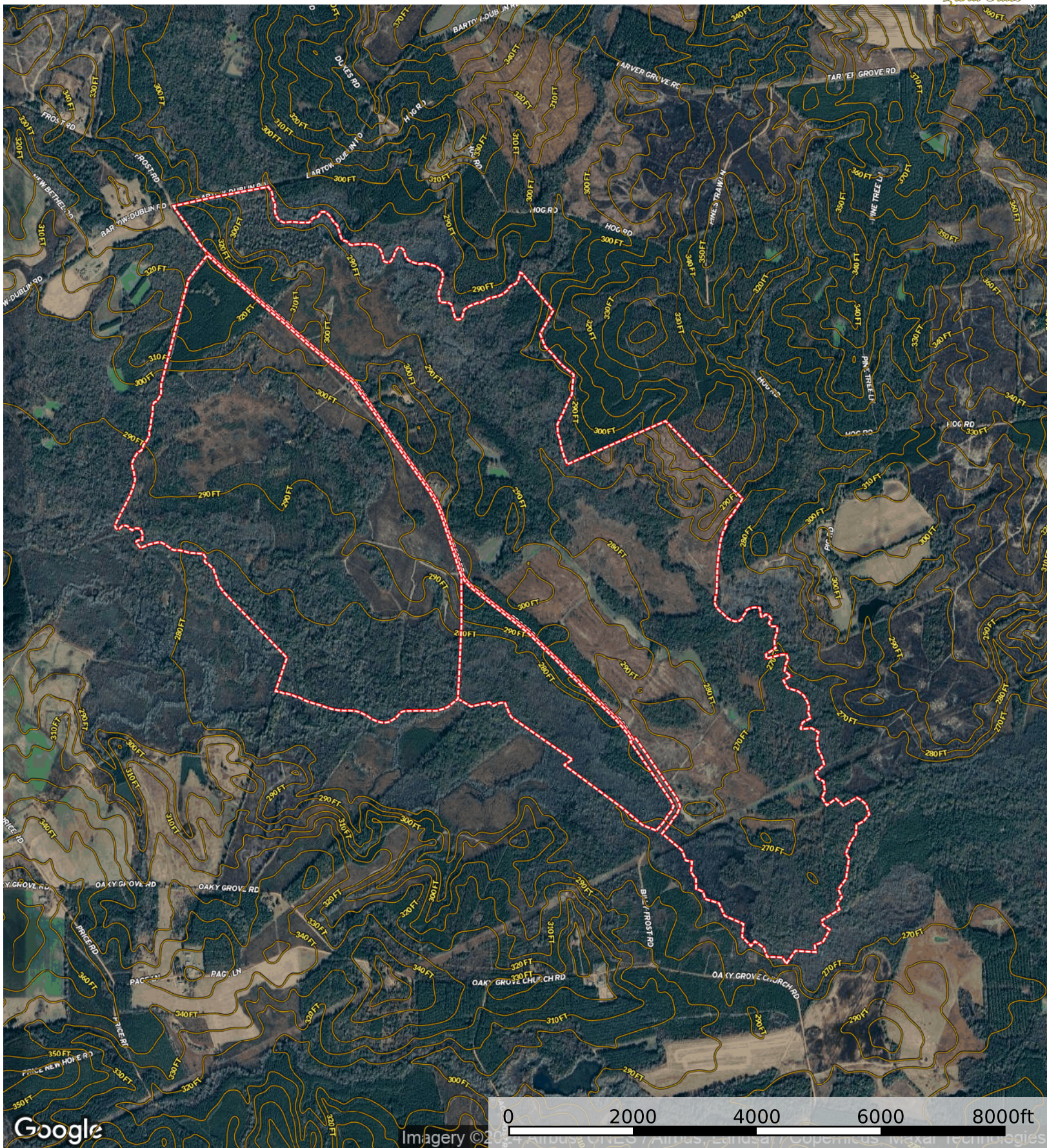
Google

Imagery © 2024 Airbus, CNES / Airbus, Landsat / Copernicus, Maxar Technologies

Boundary

Sawtooth Farm

Johnson & Washington Counties, GA +/- 1,578 Acres



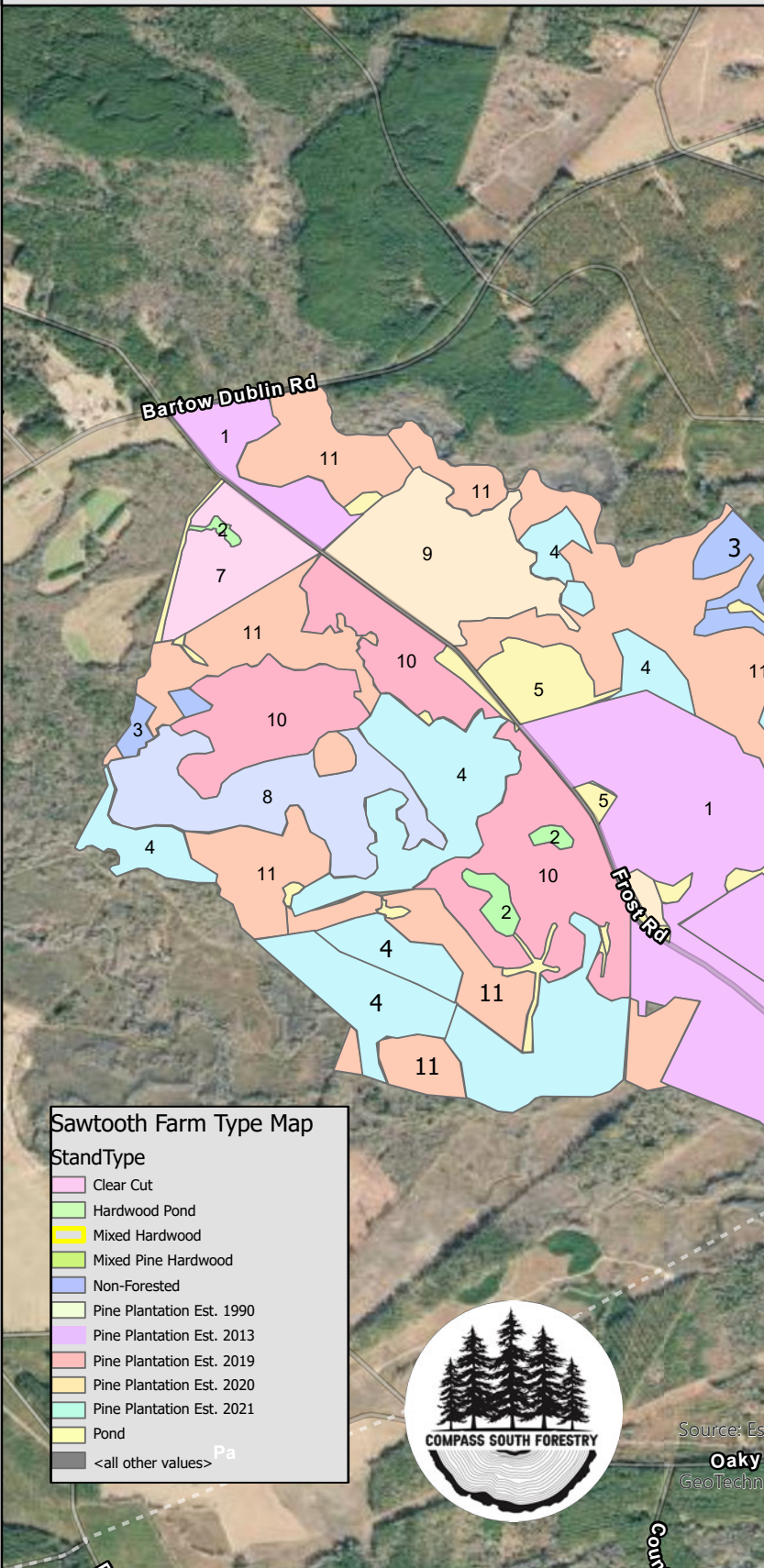
Google Imagery © 2018 Airbus, Airbus, Airbus, Copernicus, Maxar Technologies

Boundary

Sawtooth Farm

Washington & Johnson Counties, GA

Stand Type	Stand	GIS Acres
Clear Cut	1	566
Hardwood Pond	2	16
Hardwood Pulpwood	11	406
Mixed Hardwood	4	183
Mixed Merch Pine	3	23
Non-Forested	5	62
Pine Plantation Est. 1990	6	14
Pine Plantation Est. 2013	7	33
Pine Plantation Est. 2019	8	62
Pine Plantation Est. 2020	9	65
Pine Plantation Est. 2021	10	147
Pond	12	1



Sawtooth Farm Type Map

StandType

- Clear Cut
- Hardwood Pond
- Mixed Hardwood
- Mixed Pine Hardwood
- Non-Forested
- Pine Plantation Est. 1990
- Pine Plantation Est. 2013
- Pine Plantation Est. 2019
- Pine Plantation Est. 2020
- Pine Plantation Est. 2021
- Pond
- <all other values>



Source: Esri, USDA FSA, Source: Esri, Maxar, Earthstar Geographics, and the GIS User Community, Esri, TomTom, Garmin, SafeGraph, GeoTechnologies, Inc, METI/NASA, USGS, EPA, NPS, US Census Bureau, USDA, USFWS