

Chrisland Drive Tract

Orangeburg County, South Carolina, 45 AC +/-



Boundary



Chrisland Drive Tract

Orangeburg County, South Carolina, 45 AC +/-



Google

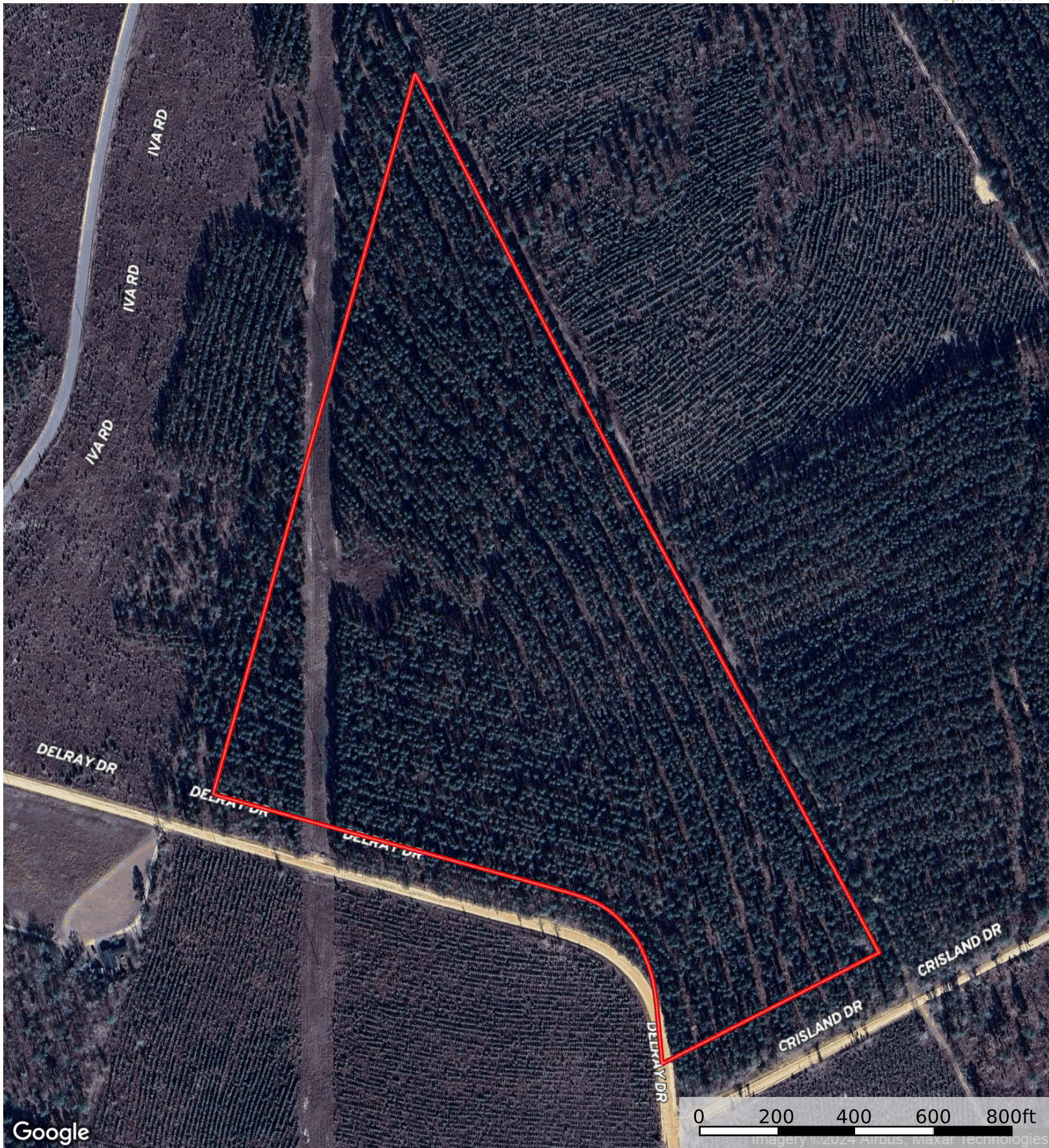
0 2000 4000 8000ft

Imagery ©2024 Airbus, Landsat / Copernicus, Maxar, TerraMetrics



Boundary





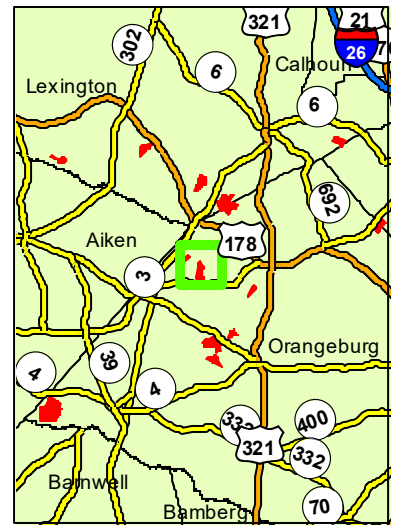
 Boundary

MC3052_B_CTT

Parcel Acres: 44.4



PollatchDelic
1 in = 0.32 miles



STAND	ACRES	YrEST	SIE	SIB	PAvgHt	COVER TYPE	PTP	PTCNS	PTS	HTP	HTS
502008001	2.5		0	0		NP - Utility ROW					
502008007	0.0		0	0		NP - Road					
502008009	41.9	1997	56	25		Pine	38.3	17.1		1.3	
TOTAL TONS							1602.7	716.9		55.7	

