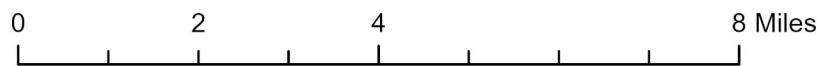
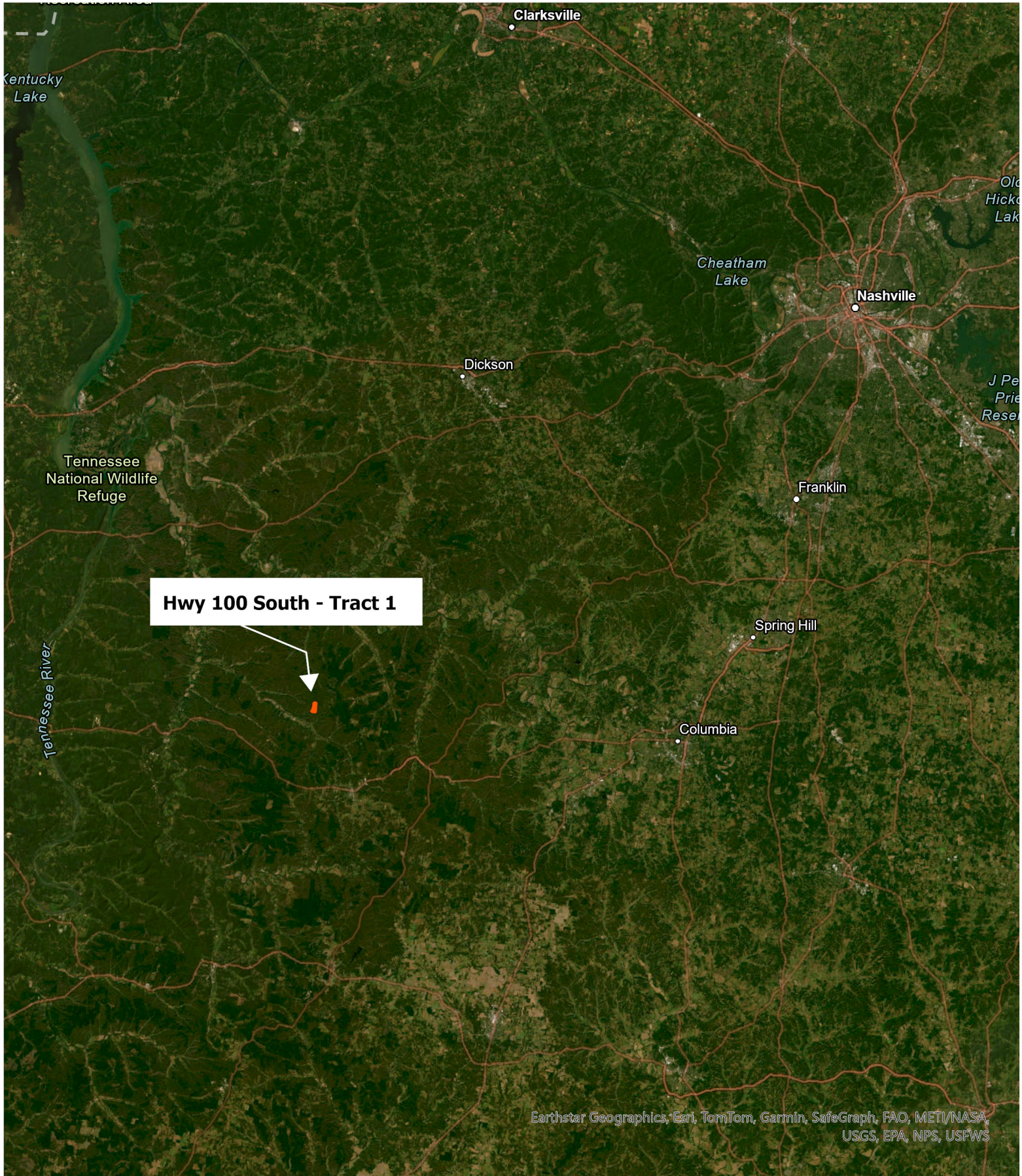


Hwy 100 South - Tract 1  
Hickman County, Tennessee, 73 AC +/-

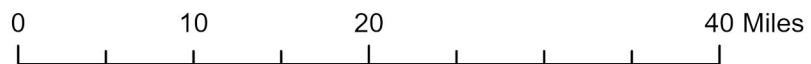


Earthstar Geographics, Esri, TomTom, Garmin, SafeGraph, GeoTechnologies, Inc, METI/NASA, USGS, EPA, NPS, USDA, USFWS

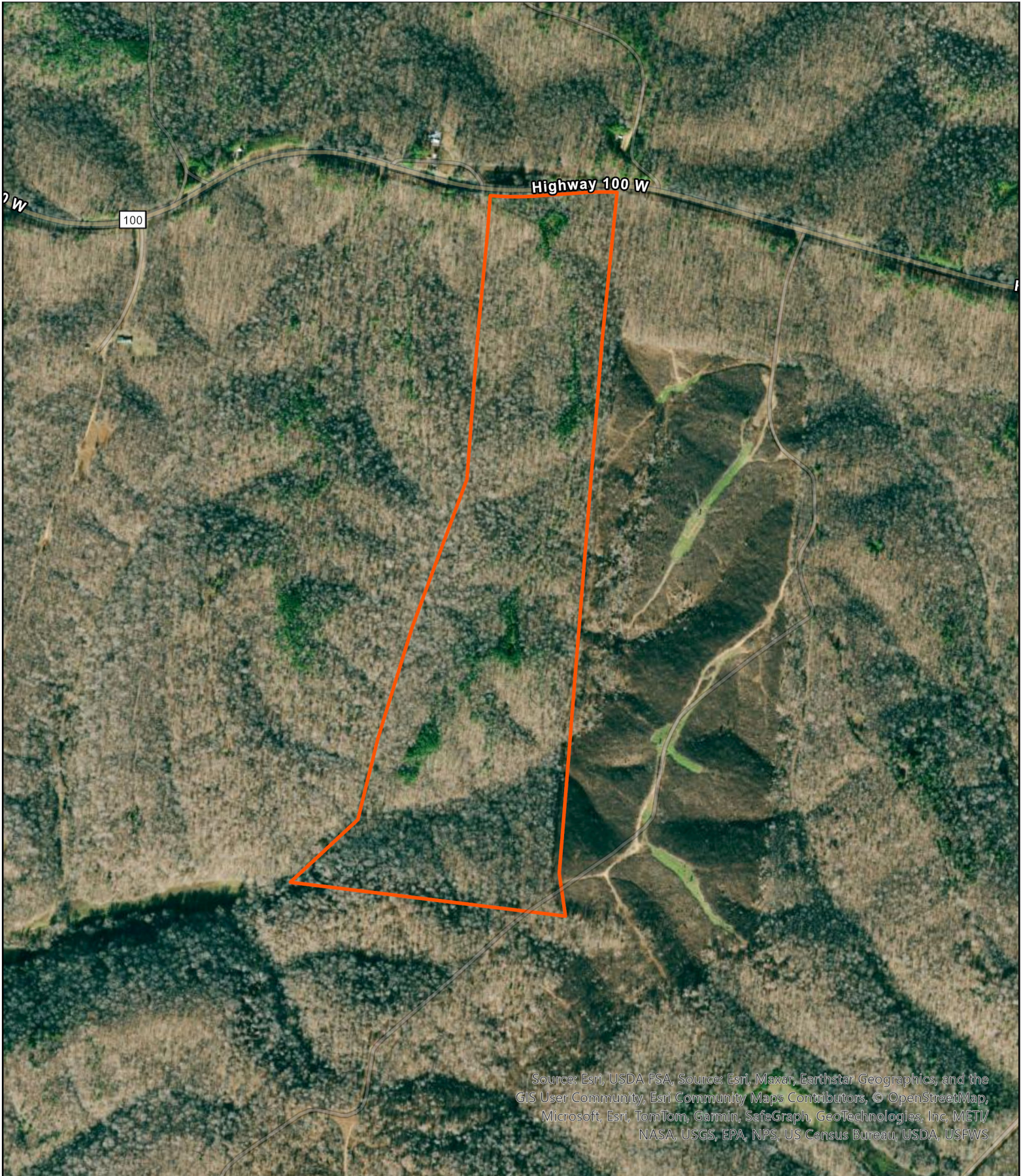
Hwy 100 South - Tract 1  
Hickman County, Tennessee, 73 AC +/-



Earthstar Geographics, Esri, TomTom, Garmin, SafeGraph, FAO, METI/NASA, USGS, EPA, NPS, USFWS



Hwy 100 South - Tract 1  
Hickman County, Tennessee, 73 AC +/-



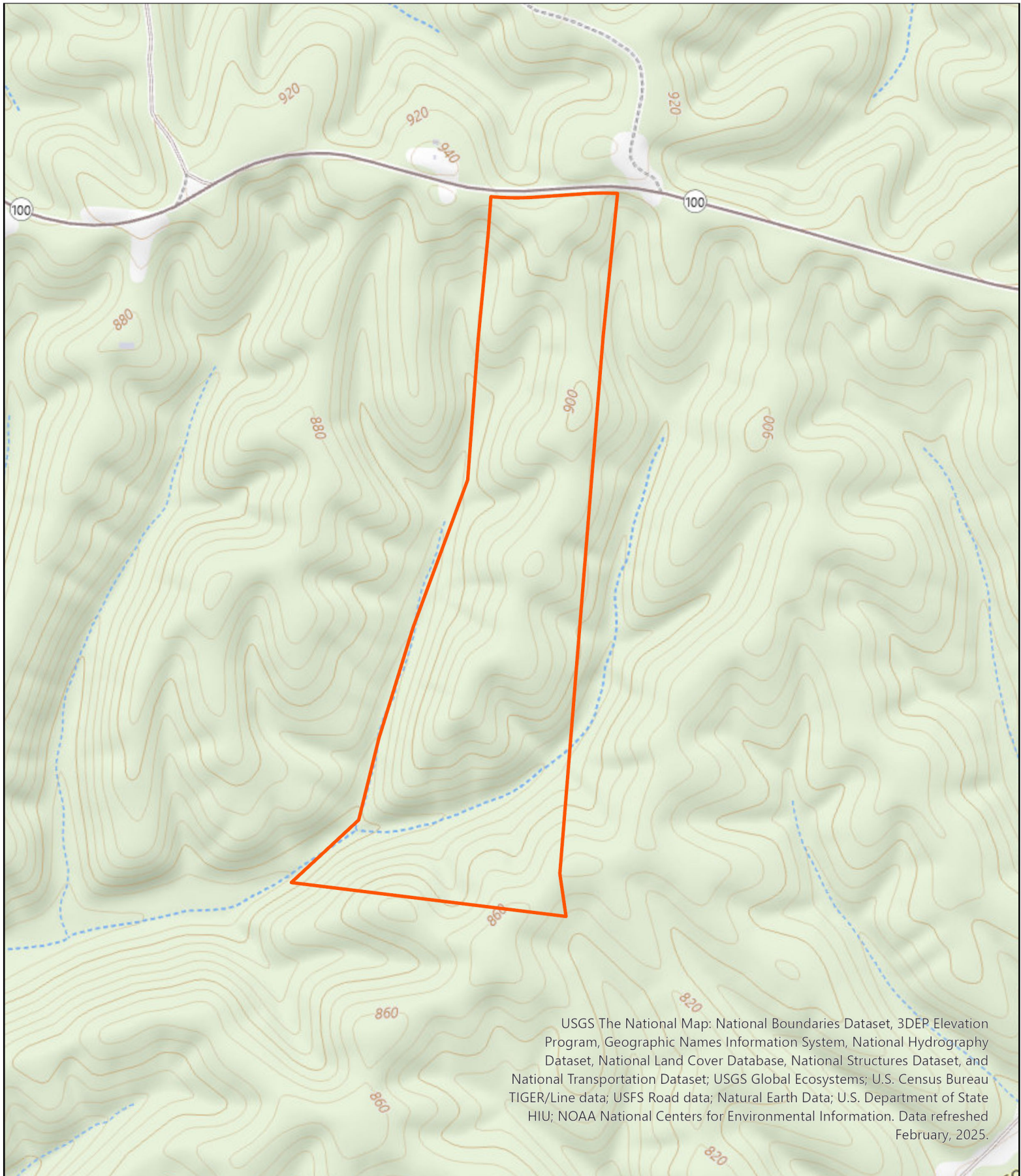
Source: Esri, USDA FSA, Source: Esri, Maxar, Earthstar Geographics, and the  
GIS User Community, Esri Community Maps Contributors, © OpenStreetMap,  
Microsoft, Esri, TomTom, Garmin, SafeGraph, GeoTechnologies, Inc, METI/  
NASA, USGS, EPA, NPS, US Census Bureau, USDA, USFWS



0 500 1,000 2,000 Feet

A horizontal scale bar with vertical tick marks at intervals of 500 feet, labeled "0", "500", "1,000", and "2,000 Feet".

Hwy 100 South - Tract 1  
Hickman County, Tennessee, 73 AC +/-



USGS The National Map: National Boundaries Dataset, 3DEP Elevation Program, Geographic Names Information System, National Hydrography Dataset, National Land Cover Database, National Structures Dataset, and National Transportation Dataset; USGS Global Ecosystems; U.S. Census Bureau TIGER/Line data; USFS Road data; Natural Earth Data; U.S. Department of State HIU; NOAA National Centers for Environmental Information. Data refreshed February, 2025.

