

Boundary

Forest Service

State Land

Fish and Wildlife

National Park

Other

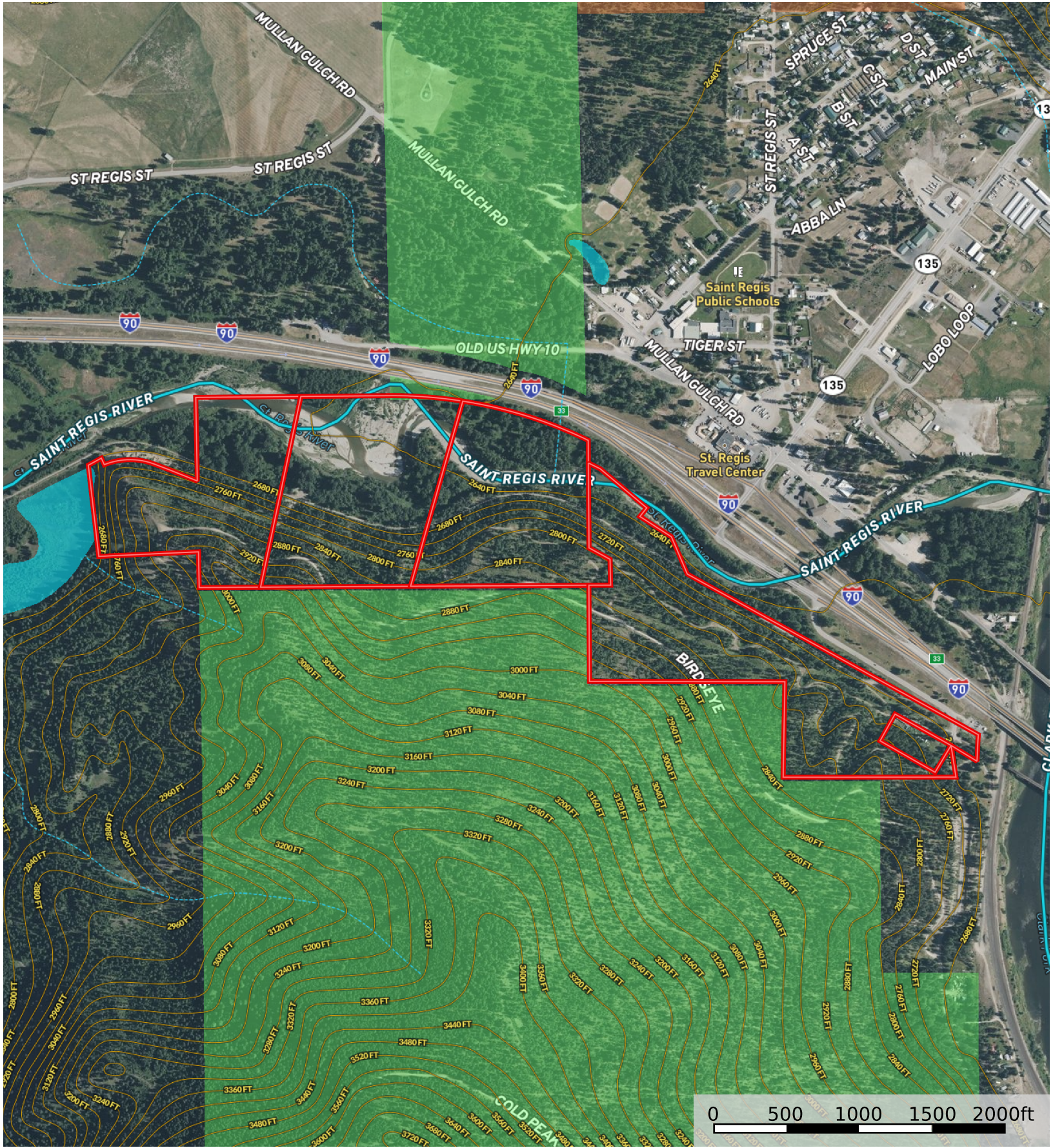
BLM

Local Government

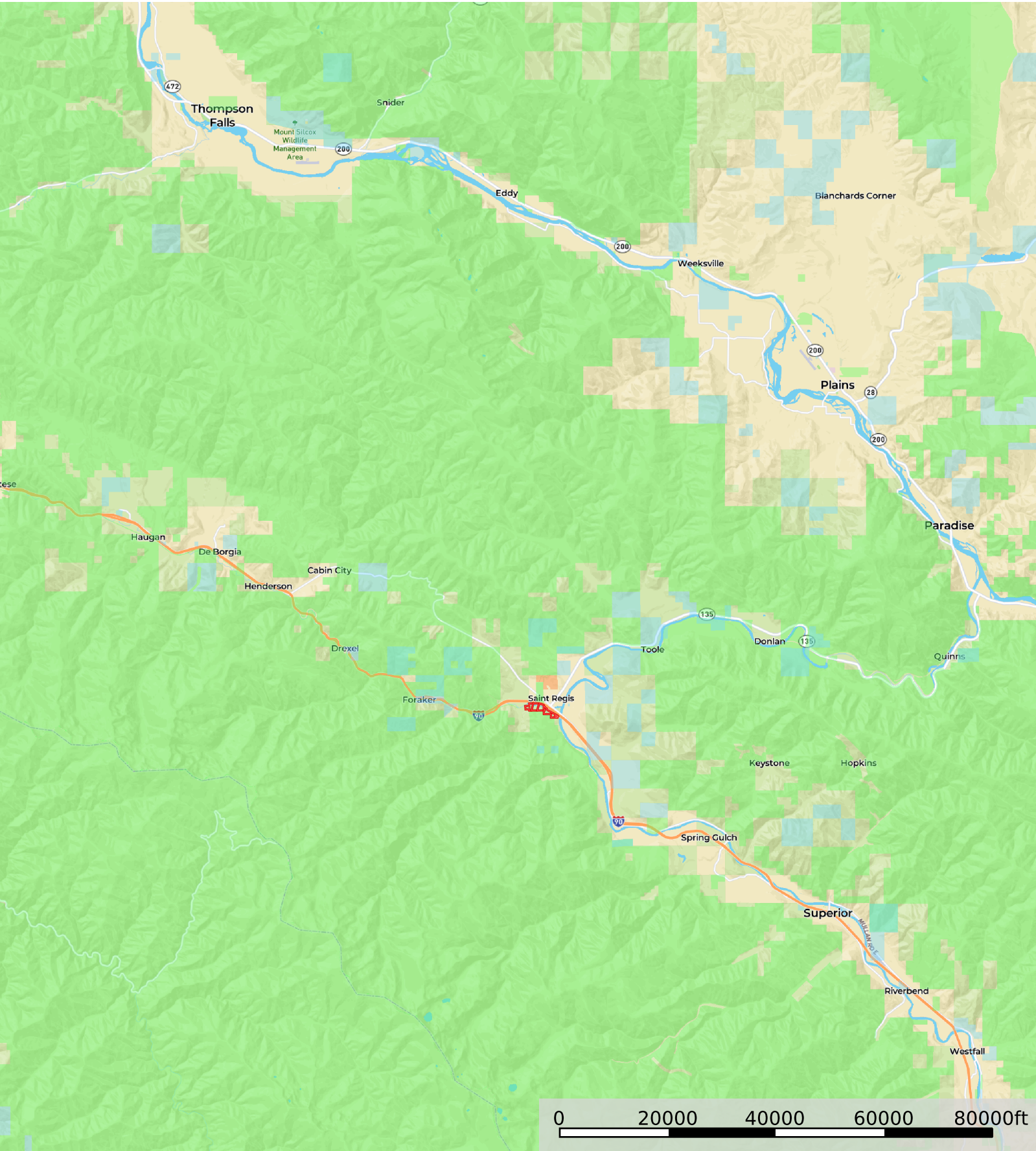
Stream, Intermittent

River/Creek

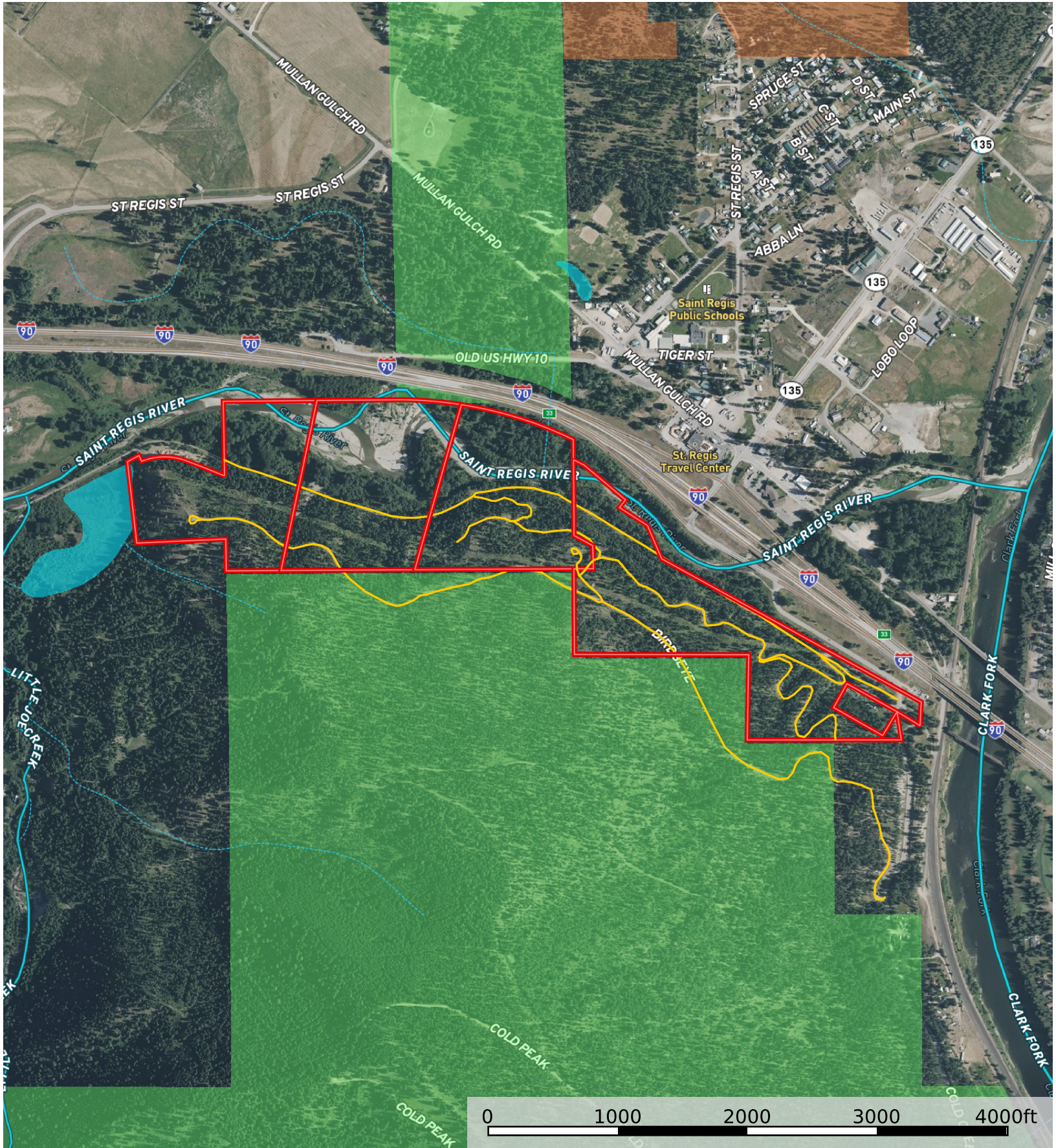
Water Body



Mineral - 135 Ac - St Regis River LLC
Mineral County, Montana, 135 AC +/-



- Boundary
- Forest Service
- State Land
- Fish and Wildlife
- National Park
- Other
- BLM
- Local Government



Primary Road

River/Creek

Boundary

Water Body

Forest Service

State Land

Fish and Wildlife

National Park

Other

BLM

Local Government

Stream, Intermittent

